

SAFE USE DATA SHEET

TECNI®Grip Holders

These fittings are designed for cable hanging and display systems in shops, picture galleries, Museums; sign hanging; lighting fixtures; horizontal and vertical tensioning; new product integration for OEMs.

They are quick and easy to install and no tools are required.

There are different Types dependent on the size of cable being used.

TECNI®Grip Type 12 Holders are designed for use with cables from 1mm to 1.2mm diameter 7x7 and 7x19 construction.

TECNI®Grip Type 15 – for use with cables from 1mm to 1.5mm diameter 7x7 and 7x19 construction.

TECNI®Grip Type 25 – for use with cables from 1.5mm to 2.5mm diameter 7x7 and 7x19 construction.

TECNI®Grip Type 30 – for use with cables from 2mm to 3mm diameter 7x7 and 7x19 construction.

TECNI®Grip Type 50 – for use with cables from 4mm to 5mm diameter 7x7 and 7x19 construction.

TECNI®Grip Type 80 – for use with cables from 6mm to 8mm diameter 7x7 and 7x19 construction.

Best Practice

- A factor of safety based on the minimum breaking load of the chosen cable diameter, should be applied for all suspension applications. The maximum load for a 7x7, stainless steel cable with 1570 N/mm² for cable diameters 1-3mm and 7x19 stainless steel, 1570 N/mm², for cable diameters 4-8mm is:

Maximum Loads for different Cable diameters

	Cable Diameter	1 mm	1.2 mm	1.5 mm	1.8 mm	2 mm	2.5 mm	3 mm	4 mm	5 mm	6 mm	8 mm
Type 12		8kg	12kg									
Type 15		8kg	12kg	16kg								
Type 20		7kg	10kg	16kg	30kg	38kg						
Type 25				23kg	30kg	35kg	42kg					
Type 30							50kg	70kg				
Type 50									80kg	130kg		
Type 80											190kg	330kg

- TECNI®Grip holders are designed to be used with 7x7 and 7x19 construction cable. They can be used with 1x19 or coated cables but they tend to slip so are not recommended. However, we have found smaller diameter nylon coated cables are easy to fit and can be used for hanging lighter pictures.

SAFE USE DATA SHEET

- Ensure the ceiling or wall fitting (hook, eyebolt etc) from which you are suspending your fitting is capable of handling the load of your object.
- Made from nickel-plated brass, these holders can be used outdoors, however the external finish will tarnish over time.
- Ensure the cable is not damaged in any way.
- Do not lubricate cables and/or holders and ensure they are free of fats, oils and rust.
- The cable-end inserted into the holder should be cut properly using a sharp cable cutter and sealed to prevent fraying (tinning, dried adhesive, electro-sealing).
- When safety is critical, we recommend two holders per object are used.
- TECNI®Grip holders are designed to be used for static, resting loads only. They are not suitable for moving dynamic loads or suspending people.
- TECNI®Grip holders should not be used as a connecting element on safety ropes.
- The cable deviation from the plumb–line may not exceed 10°

Installation

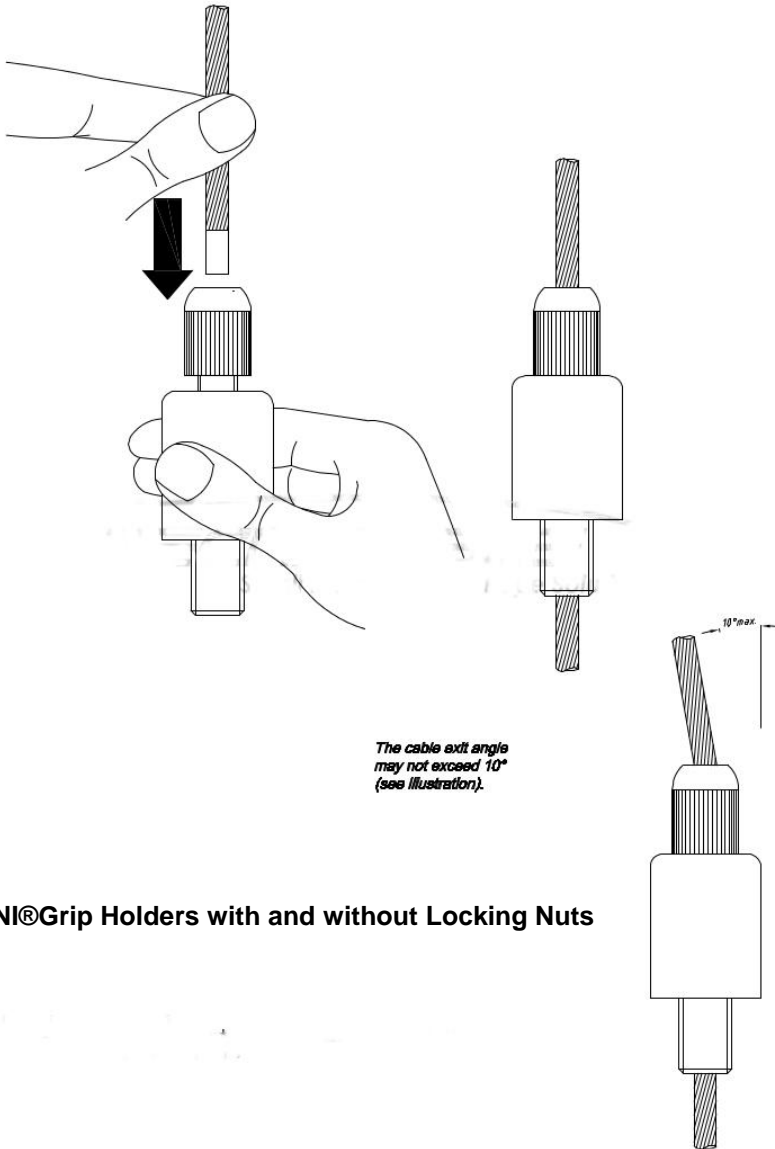
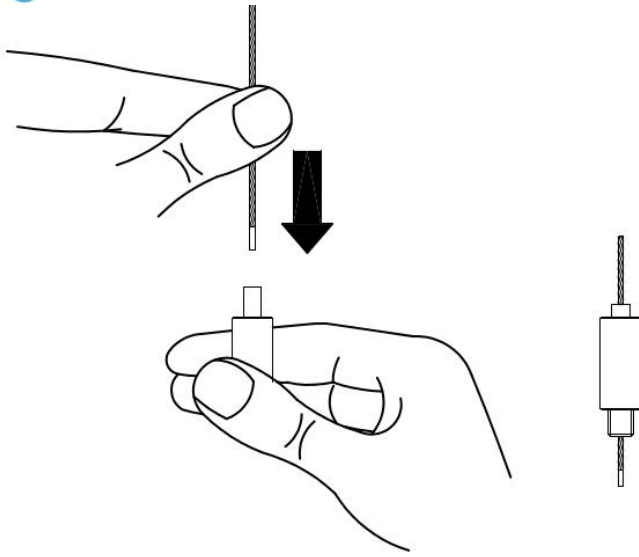
These fittings are all fitted in the same way and once installed, the full load is attached to the holder and will no longer move.

- Gently depress the spring-loaded plunger (the pipe sticking out of the cable holder) and insert one end of the cable into it.
- For TECNI®Grip holders with a screw nut, undo the screw nut completely before depressing the plunger.
- Thread the cable through the holder as required, but at least far enough to be able to clearly see it protrude from the other end of the holder.
- Release the plunger to attach the load. The cable is gripped by ball bearings inside the fitting.
- Once the holder is in the desired position, if it has a safety-nut, screw it down as far as possible by hand (do not use tools).
- To adjust, simply reverse the procedure: completely unscrew the safety-nut, press the spring-loaded plunger with your finger. Move the holder up and down the cable as required. Screw the nut back again.

See 'How to Install?' Video at <http://www.tecni-cable.co.uk/Products/TECNIgrip-Cable-Suspension-Fitting> and illustrations below.

IMPORTANT! Please keep this instruction sheet for future reference!

SAFE USE DATA SHEET



TECNI®Grip Holders with and without Locking Nuts